

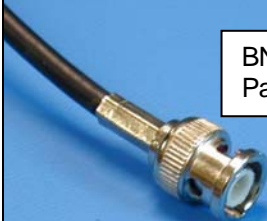
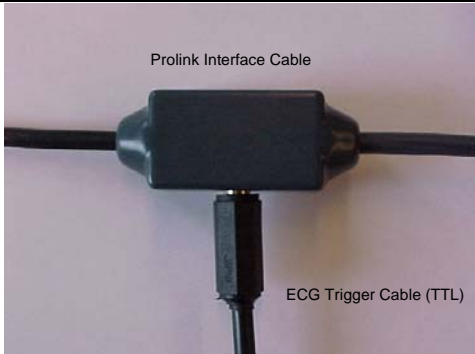


Welch Allyn CardioPerfect Workstation Tango Interface Notes

You can setup the Tango with your stress system using the following directions. You will need the ECG trigger and RS-232 cables specified below.

- The ECG trigger cable is required for the Tango monitor to be able to take a BP measurement. The stress system will require the Prolink interface in order to supply an ECG trigger for the Tango
- You will need the RS-232 cable to establish communication between the Tango and your stress system. This cable allows your stress system to prompt the Tango when it needs a BP measurement. In addition, it allows the BP measurements taken by the Tango to be transferred to your stress system display and reports. The stress system will require an open serial communication port for this capability.

	<div style="border: 1px solid black; padding: 5px; width: fit-content;"> RS-232 Part # 91-0013-00 </div>	
	<div style="border: 1px solid black; padding: 5px; width: fit-content;"> BNC External ECG Part # 91-0018-01 </div>	
	<div style="border: 1px solid black; padding: 5px; width: fit-content;"> Prolink Interface Cable ECG Trigger Cable (TTL) </div>	
<div style="margin-bottom: 10px;"> <h3>1. Plugging in the ECG trigger cable</h3> </div> <p>Connect: the ECG trigger cable, SunTech part #91-0018-01 (BNC to 1/8" stereo phono plug)</p> <p>From: the BNC External ECG connection on the rear panel of the Tango (BNC)</p> <p>To: the phone jack on the Prolink interface cable, see picture above (1/8" phono plug);</p> <p>Note: use stereo phono jack splitter if jack is also required for echocardiogram</p>		

2. Plugging in the RS-232 cable

Connect: the RS-232 cable, SunTech part #91-0013-00 (9 pin female to 9 pin female)

From: the RS-232 connection on the rear panel of the Tango

To: the COM 2 port on the back of the stress system computer

3. Setting up the Tango monitor

- a. Turn on the Tango using the switch at the rear top left corner of the Tango.
- b. Once the operating screen is displayed, press the *MENU/SELECT* button. Use the UP or DOWN buttons to select **Utilities** and press the menu button.
- c. Use the arrow buttons to select **Device** and press the *MENU/SELECT* button to edit. Choose **SUNTECH** using the arrow buttons and press the select button to confirm the choice.
- d. Select **ECG trigger** and press the select button to edit. Choose **DIGITAL**↑ and press the select button to confirm the choice.
- e. Select **Exit** twice to return to the operating screen.

4. Setting up the stress system (requires an open serial communication port)

a. From the ECG software, click **File**, then **Settings**.

b. Select **Exercise ECG**.

c. On the **Devices** tab, set the following parameters:

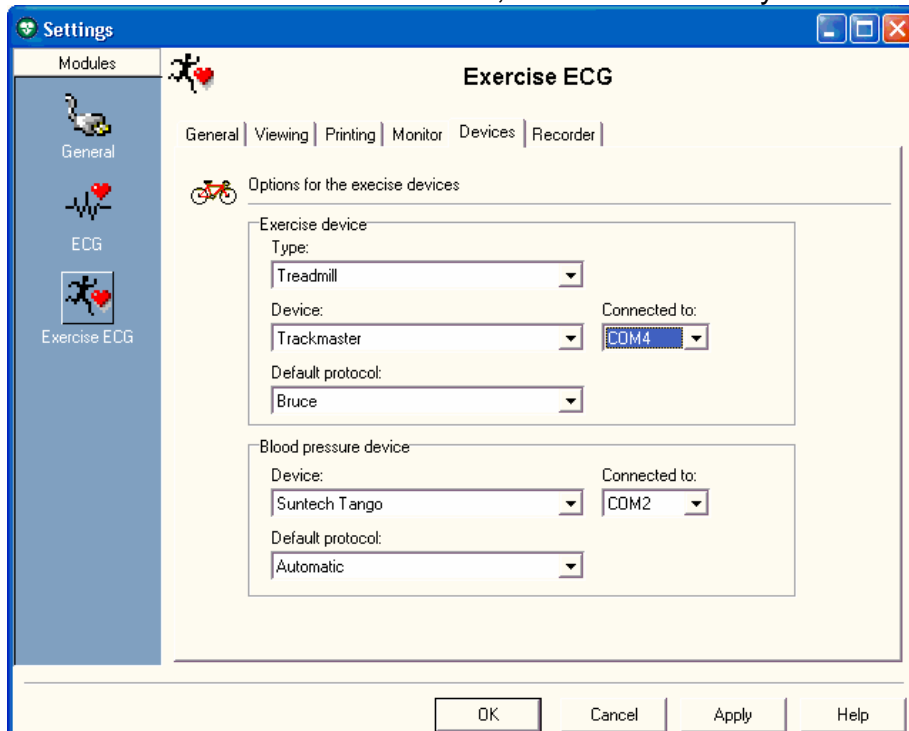
Under **Blood pressure device**, **Device** is **SunTech Tango**

Connected to should be set to the desired Com port, typically **COM2**

Default protocol is **None** for measurements started using the Tango

Automatic for measurements started at the end of stage

Note: Protocols can be customized; contact Welch Allyn for further details.



- d. Click on the **Recorder** tab, set the following parameters:
Analog output is ECG signal
- e. Click on **OK** and then exit the Workstation Software.
- f. Reopen the workstation for the changes to take affect.
- g. Start a stress test and when you click on the BP button, the Tango will take a measurement.

TIPS

You must have a patient hooked up to the stress system with a valid ECG trace and the BP cuff on for the Tango to operate correctly. Refer to the Tango manual for proper patient hookup.

While in the Stress ECG software module, you may press the F5 key or the BP icon on the display to initiate a BP measurement.

In order to ensure that the Tango interfaces properly with the CardioPerfect Workstation, start the stress ECG software module immediately after collecting the resting ECG data.